

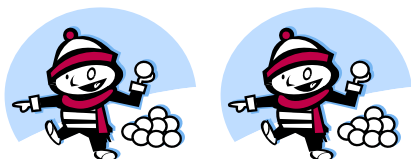
Principally Speaking

It's snow season! Students will have to make adjustments in outdoor play activities because of the snow and ice. Please remind your child/ren that throwing snowballs or iceballs is not an acceptable winter sport at school. We understand that there is a great temptation to participate in such activities, but it is against school policy. This policy includes on the way to and from school and at the bus stop.

Also, please remember that snow means cold temperatures too! Students should have on long sleeves! In addition, be sure that your child is wearing the appropriate outdoor gear like hats, gloves, and a scarf. Many of our students are arriving without these items!

Yours in Education,

George E. Loder, Principal



Washington Elementary Mission Statement

- Experience a caring, safe, rusting atmosphere
- Acquire skills that will prepare them to be competitive in an ever changing world.
- Establish a foundation for successful transition to the next educational phase.
- Develop into life-long learners

CALENDAR

Jan 17TH - No Classes
Martin Luther King Day

Jan 19th- Identi-Kid Program

Jan 21st- Roller Skating Party
Morning Classes only
(Dismissal at 12:14)

Jan 27th- Science Rocks Program



Vision and hearing screening for new kindergarten entrants will be held at the MACOMB COUNTY HEALTH DEPT. in Mt. Clemens on Tuesday, Jan 18th and Friday, Jan 21st. Call 586-412-5945 for an appointment.

BOX TOP NEWS

The two top classes turning in the most Box Tops and Labels for Education for the first semester are:

1st Place	Mrs. Allor	Pizza Party
2nd Place	Mrs. Dickinson	Ice Cream Party

We will start a new contest to see which class will turn in the most Box Tops and Labels for Education for the second semester. Please turn in any completed collection sheets by sheet by January 19th. Those students will be rewarded prizes for turning them in. New collection sheets will be coming home on January 21st.

New changes are being made to help beat our last year grand total of over 18,000 points. So far we only have over 4,000 points. For every 1,000 points increment, we will have a "Fun" day. When we hit 5,000, we will have a "Hat" day. Please check your Parent Newsletter every week to see when that will be.

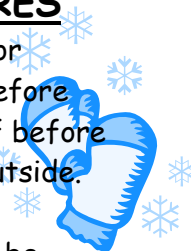
SCHOOL CLOSINGS

Information regarding school closings due to emergency situations or inclement weather may be obtained by going to our website, www.mtcps.org, or tuning in to the following radio stations: WWJ (AM 950), and WNIC (FM 100.3).

Also, all local television stations, Channels 2, 4, and 7 will list as well as read school closings. Please be sure to watch or listen for the words...MOUNT CLEMENS COMMUNITY SCHOOLS.

BEFORE SCHOOL PROCEDURES

Please be reminded that parents and/or students may not enter the building before **7:35AM**. If students are dropped off before this time, they will be asked to wait outside. In the event of inclement weather, or temperatures below 20°, students will be guided inside by the teachers



HAPPY BIRTHDAY TO YOU!

*Tyler Thompson
Micah Allison
Nehemiah Campbell
Alyssa Everett
Brianna Heck*



PLEASE REMEMBER OUR EARLY RELEASE DAYS

All children will be dismissed at **1:14**

Feb. 2, 2011	Mar. 16, 2011
Apr. 20, 2011	May 4, 2011
May 18, 2011	

What's For Lunch?

Monday- NO SCHOOL
Tuesday- Mac & Cheese
Wednesday- Chicken Fajita
Thursday- Meatballs w/ gravy
Friday – ½ day bag lunch

WANTED

THE MOUNT CLEMENS FOOD SERVICE
DEPARTMENT IS SEEKING ON CALL WORKERS.
PLEASE CONTACT JILL KLEHAMMER FOR MORE
INFORMATION
586-461-3741